

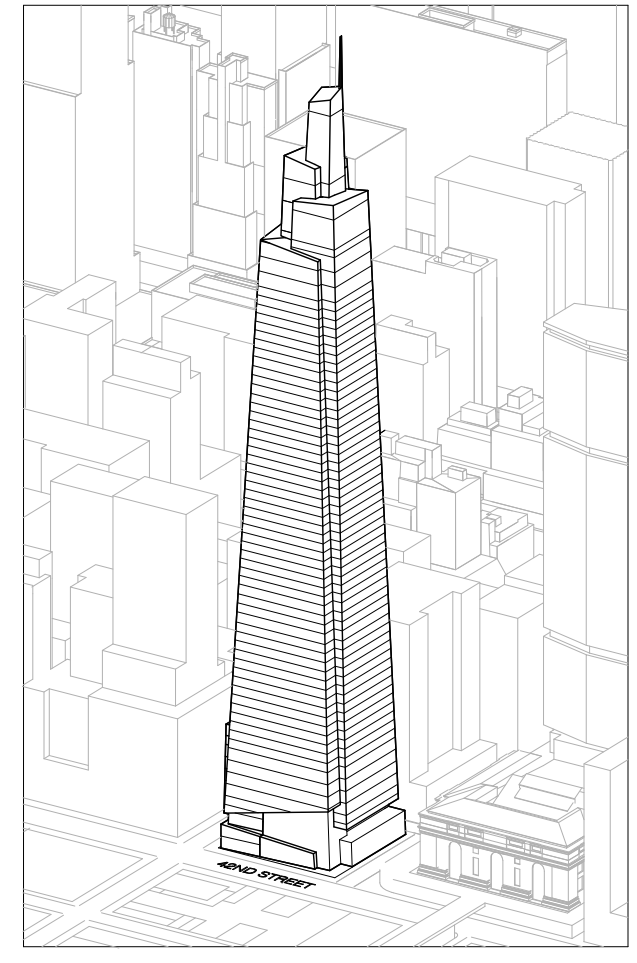


ONE VANDERBILT

D.O.B NEW BUILDING SUBMISSION

SEPTEMBER 30TH, 2016

ONE VANDERBILT



**Developer**  
SL Green  
420 Lexington Avenue, 18th Floor  
New York, NY 10017  
Tel: 212.356.4149 Fax: 212.216.1796

**Development Advisor**  
Hines  
499 Park Avenue  
New York, NY 10022  
Tel: 212.230.2300 Fax: 212.230.2276

**Architect**  
Kohn Pedersen Fox Associates PC  
Architects & Planning Consultants  
11 West 42nd Street  
New York, NY 10036  
Tel: 212.677.6500 Fax: 212.956.2536

**Structural Engineer**  
Severud Associates Consulting Engineers  
469 Seventh Avenue, Suite 900  
New York, NY 10013  
Tel: 212.686.1700 Fax: 212.687.6467

**Mechanical, Electrical, Plumbing, Fire Protection**  
Jenss Baum & Bolles  
80 Pine Street  
New York, NY 10013  
Tel: 212.330.8300 Fax: 212.269.5894

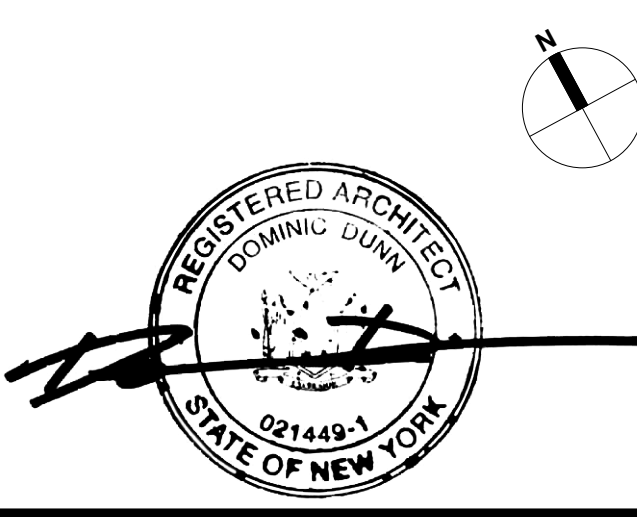
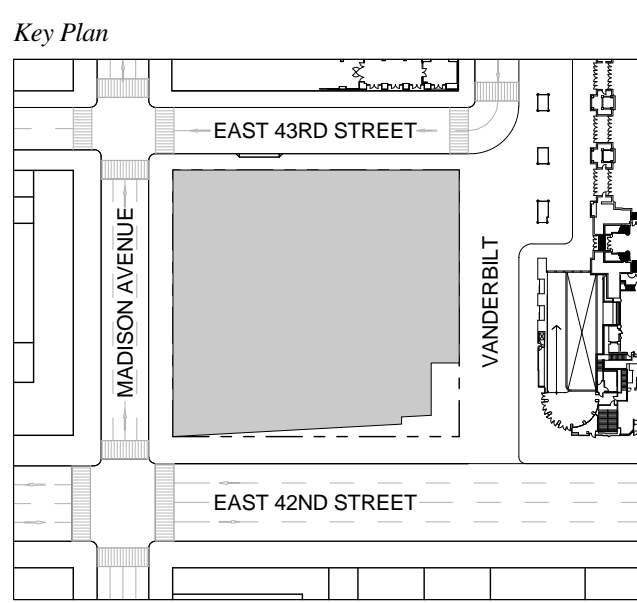
**Civil / Geotechnical Engineer**  
Langan Engineering, Environmental, Surveying and  
Landscape Architecture, D.P.C.  
21 Penn Plaza, 260 West 21 Street, 8th Floor  
New York, NY 10001  
Tel: 212.479.5400 Fax: 212.479.5444

**Vertical Transportation**  
Van Dusen & Associates  
5 Regent Street, Suite 524  
Livingston, NJ 07039  
Tel: 973.994.9220 Fax: 973.994.2539

**Code Consulting**  
Code Consultants, Inc.  
215 West 48th Street, 15th Floor  
New York, NY 10018  
Tel: 212.216.6996 Fax: 212.216.9619

1 DOB NEW BUILDING SUBMISSION 09-30-2016

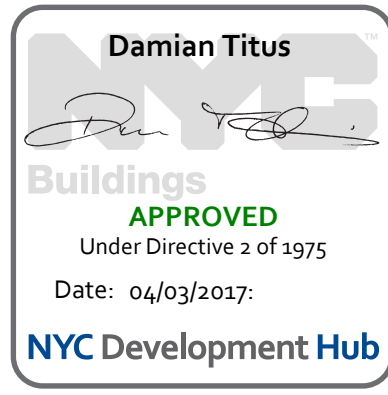
No. Issue Date



Issue Date: 09-30-2016  
Project No. 1943  
Drawn By  
Scale

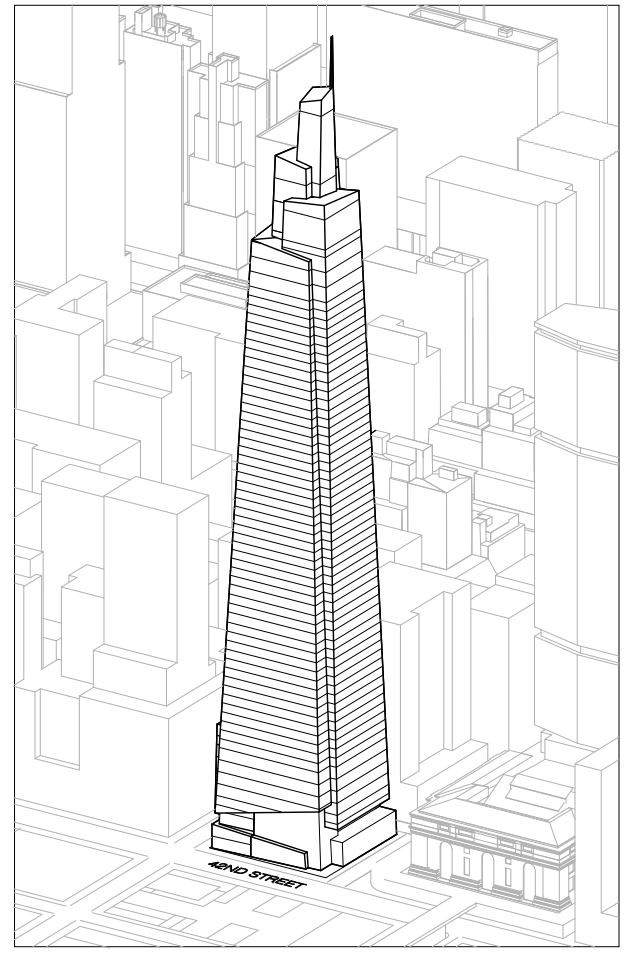
Drawing Title  
COVER SHEET

Drawing Number  
G-001.00  
SHEET 1 OF 278





ONE VANDERBILT



**Developer**  
SL Green  
420 Lexington Avenue, 18th Floor  
New York, NY 10017  
Tel: 212.356.4149 Fax: 212.216.1796

**Development Advisor**  
Hines  
499 Park Avenue  
New York, NY 10022  
Tel: 212.230.2300 Fax: 212.230.2276

**Architect**  
Kohn Pedersen Fox Associates PC  
Architects & Planning Consultants  
11 West 42nd Street  
New York, NY 10036  
Tel: 212.677.6500 Fax: 212.956.2536

**Structural Engineer**  
Severud Associates Consulting Engineers  
469 Seventh Avenue, Suite 900  
New York, NY 10013  
Tel: 212.686.1700 Fax: 212.687.6467

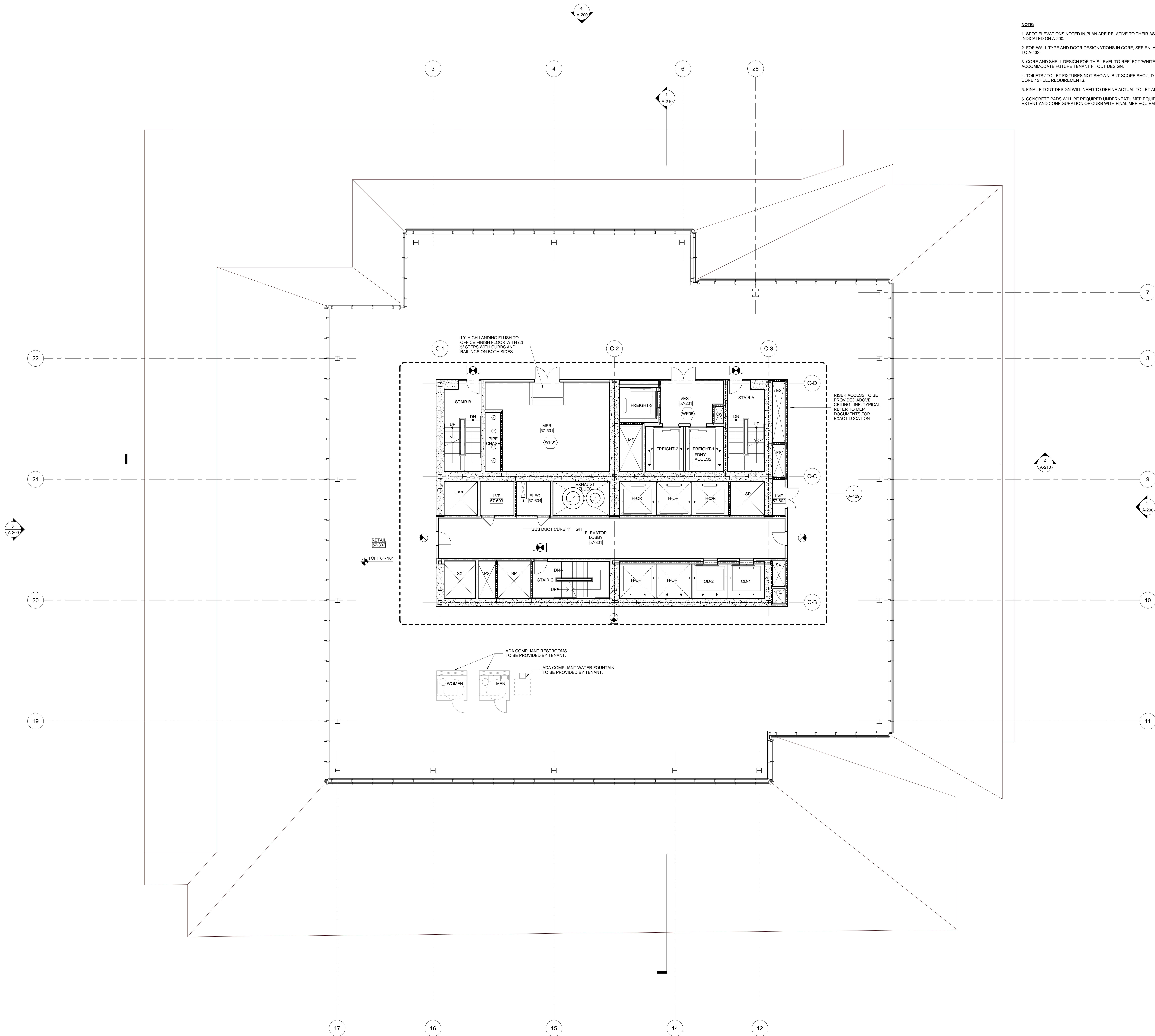
**Mechanical, Electrical, Plumbing, Fire Protection**  
Janss Baum & Bolles  
80 Pine Street  
New York, NY 10013  
Tel: 212.330.8300 Fax: 212.269.5894

**Civil / Geotechnical Engineer**  
Langan Engineering, Environmental, Surveying and  
Landscape Architecture, D.P.C.  
21 Penn Plaza, 360 West 21 Street, 8th Floor  
New York, NY 10001  
Tel: 212.479.5400 Fax: 212.479.5444

**Vertical Transportation**  
Van Dusen & Associates  
5 Regent Street, Suite 524  
Livingston, NJ 07039  
Tel: 973.994.9220 Fax: 973.994.2539

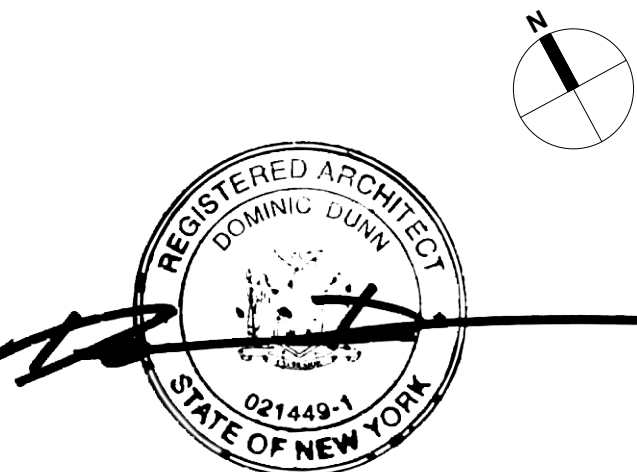
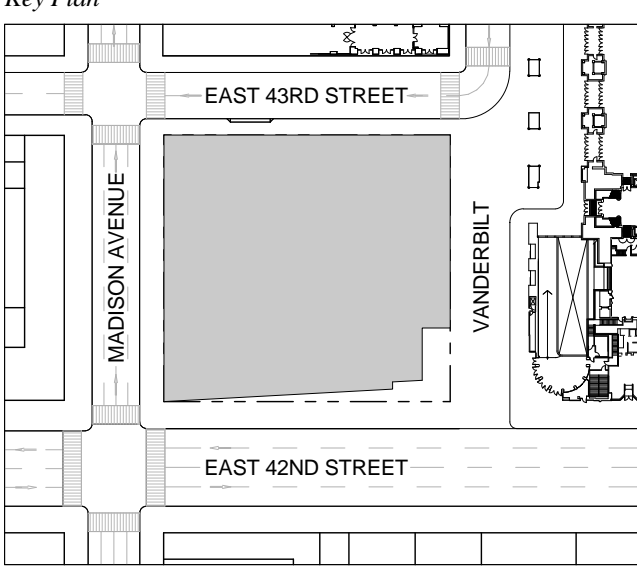
**Code Consulting**  
Code Consultants, Inc.  
215 West 48th Street, 15th Floor  
New York, NY 10013  
Tel: 212.216.6996 Fax: 212.216.9619

- NOTE:**
1. SPOT ELEVATIONS NOTED IN PLAN ARE RELATIVE TO THEIR ASSOCIATED LEVEL LINES INDICATED ON A-200.
  2. FOR WALL TYPE AND DOOR DESIGNATIONS IN CORE, SEE ENLARGED CORE PLANS A-400 TO A-433.
  3. CORE AND SHELL DESIGN FOR THIS LEVEL TO REFLECT WHITE BOX DELIVERY TO ACCOMMODATE FUTURE TENANT FITOUT DESIGN.
  4. TOILETS / TOILET FIXTURES NOT SHOWN, BUT SCOPE SHOULD BE INCLUDED TO REFLECT CORE / SHELL REQUIREMENTS.
  5. FINAL FITOUT DESIGN WILL NEED TO DEFINE ACTUAL TOILET AND FIXTURE COUNT.
  6. CONCRETE PADS WILL BE REQUIRED UNDERNEATH MEP EQUIPMENT. COORDINATE EXTENT AND CONFIGURATION OF CURB WITH FINAL MEP EQUIPMENT CUT SHEET.



1 DOB NEW BUILDING SUBMISSION 09-30-2016

No. Issue Date



Issue Date: 09-30-2016  
Project No: 1943  
Drawn By:  
Scale: 1/8" = 1'-0"

Drawing Title  
**FLOOR PLAN 57  
RETAIL 1**

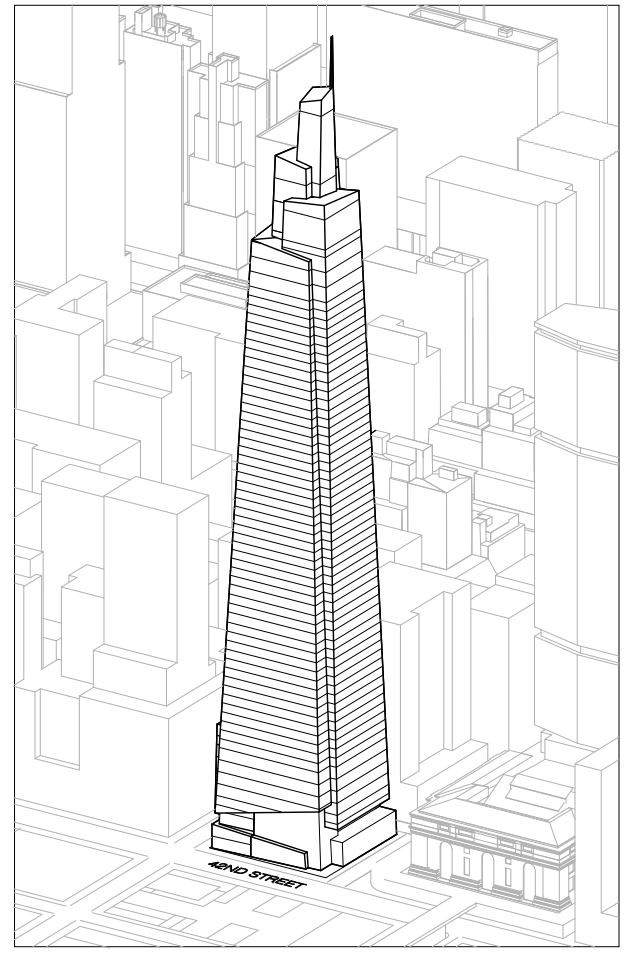
Drawing Number

**A-157.00**  
SHEET 45 OF 278





# ONE VANDERBILT



**Developer**  
SL Green  
420 Lexington Avenue, 18th Floor  
New York, NY 10017  
Tel: 212.356.4149 Fax: 212.216.1796

**Development Advisor**  
Hines  
49 Park Avenue  
New York, NY 10022  
Tel: 212.230.2300 Fax: 212.230.2276

**Architect**  
Kohn Pedersen Fox Associates PC  
Architects & Planning Consultants  
11 West 42nd Street  
New York, NY 10036  
Tel: 212.677.6500 Fax: 212.956.2536

**Structural Engineer**  
Severson Associates Consulting Engineers  
469 Seventh Avenue, Suite 900  
New York, NY 10013  
Tel: 212.686.1700 Fax: 212.687.6467

**Mechanical, Electrical, Plumbing, Fire Protection**  
Jens Baum & Bolles  
80 Pine Street  
New York, NY 10013  
Tel: 212.330.8300 Fax: 212.269.5894

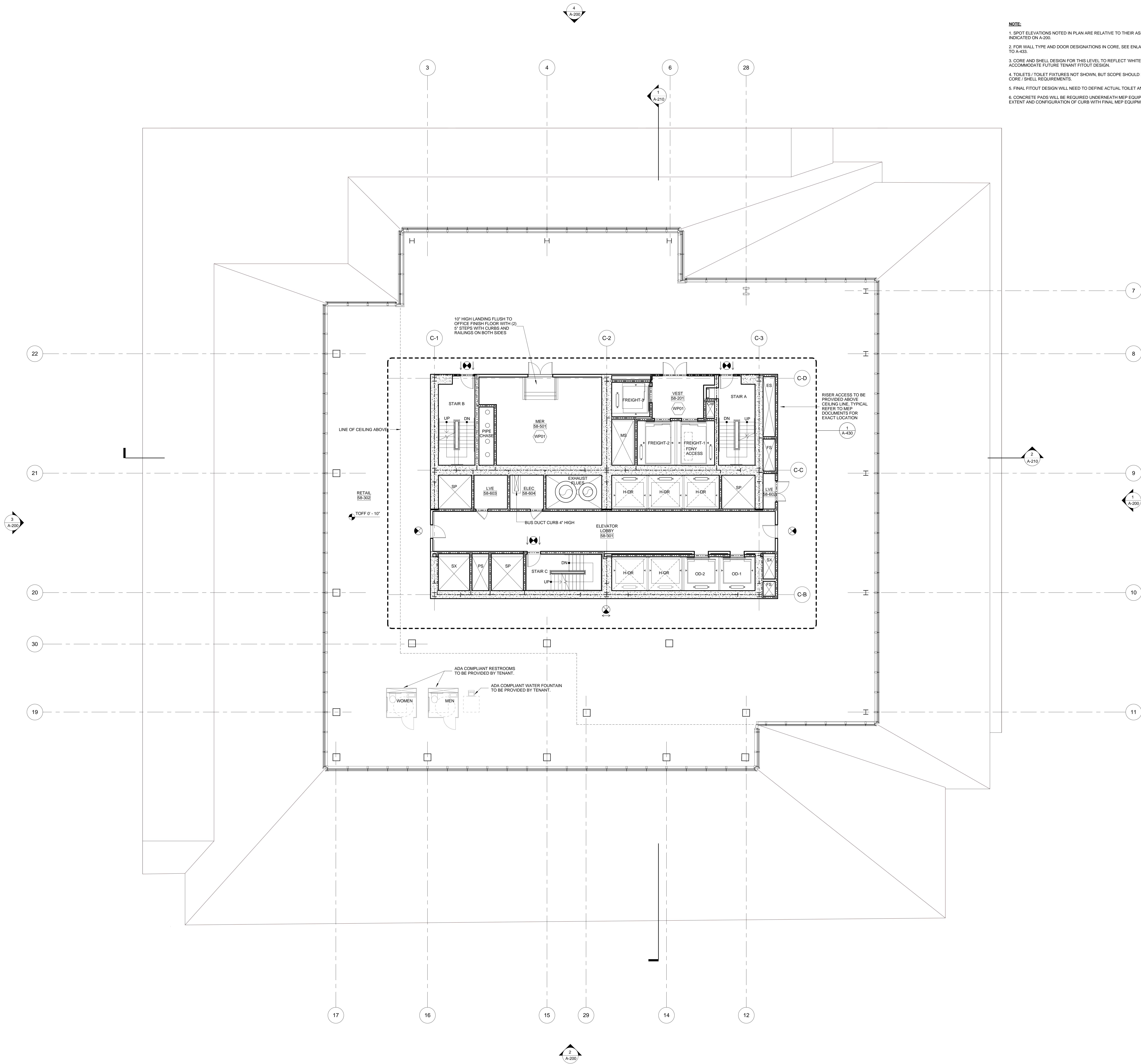
**Civil / Geotechnical Engineer**  
Langan Engineering, Environmental, Surveying and  
Landscape Architecture, D.P.C.  
21 Penn Plaza, 360 West 21 Street, 8th Floor  
New York, NY 10001  
Tel: 212.479.5400 Fax: 212.479.5444

**Vertical Transportation**  
Van Dusen & Associates  
5 Regent Street, Suite 524  
Livingston, NJ 07039  
Tel: 973.994.9220 Fax: 973.994.2539

**Code Consulting**  
Code Consultants, Inc.  
215 West 48th Street, 15th Floor  
New York, NY 10018  
Tel: 212.216.6996 Fax: 212.216.9619

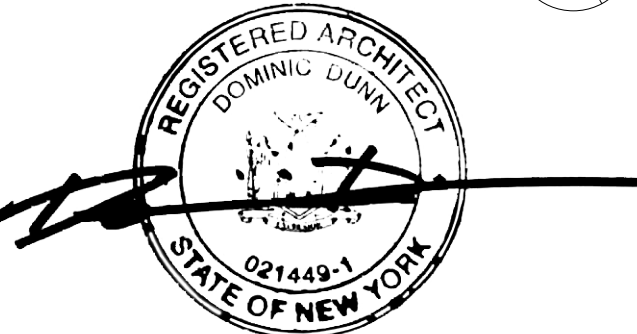
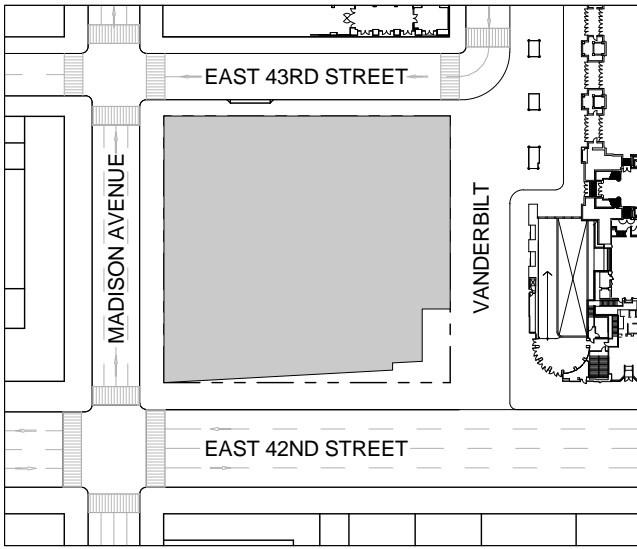
## NOTE:

1. SPOT ELEVATIONS NOTED IN PLAN ARE RELATIVE TO THEIR ASSOCIATED LEVEL LINES INDICATED ON A-200.
2. FOR WALL TYPE AND DOOR DESIGNATIONS IN CORE, SEE ENLARGED CORE PLANS A-400 TO A-433.
3. CORE AND SHELL DESIGN FOR THIS LEVEL TO REFLECT WHITE BOX DELIVERY TO ACCOMMODATE FUTURE TENANT FITOUT DESIGN.
4. TOILETS / TOILET FIXTURES NOT SHOWN, BUT SCOPE SHOULD BE INCLUDED TO REFLECT CORE / SHELL REQUIREMENTS.
5. FINAL FITOUT DESIGN WILL NEED TO DEFINE ACTUAL TOILET AND FIXTURE COUNT.
6. CONCRETE PADS WILL BE REQUIRED UNDERNEATH MEP EQUIPMENT. COORDINATE EXTENT AND CONFIGURATION OF CURB WITH FINAL MEP EQUIPMENT CUT SHEET.



1 DOB NEW BUILDING SUBMISSION 09-30-2016

No. Issue Date



Issue Date: 09-30-2016  
Project No: 1943  
Drawn By:  
Scale: 1/8" = 1'-0"

Drawing Title  
**FLOOR PLAN 58  
RETAIL 2**

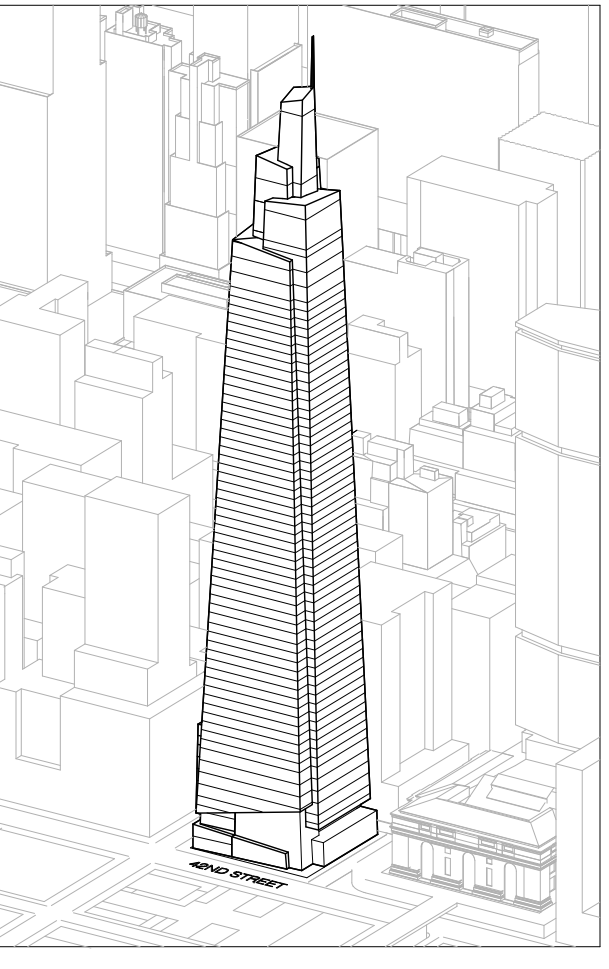
Drawing Number

**A-158.00**  
SHEET 46 OF 278





# ONE VANDERBILT



*Developer*  
L. Green  
20 Lexington Avenue, 18th Floor  
New York, NY 10170  
Tel: 212.356.4149 Fax: 212.216.1796

*Development Advisor*  
lines  
99 Park Avenue  
New York, NY 10022  
Tel: 212.230.2300 Fax: 212.230.2276

**architect**  
John Pedersen Fox Associates PC  
Architects & Planning Consultants  
1 West 42nd Street  
New York, NY 10036  
Tel: 212.977.6500 Fax: 212.956.2526

**Structural Engineer**  
Everud Associates Consulting Engineers  
69 Seventh Avenue, Suite 900  
New York, NY 10018  
Tel: 212.986.3700 Fax: 212.687.6467

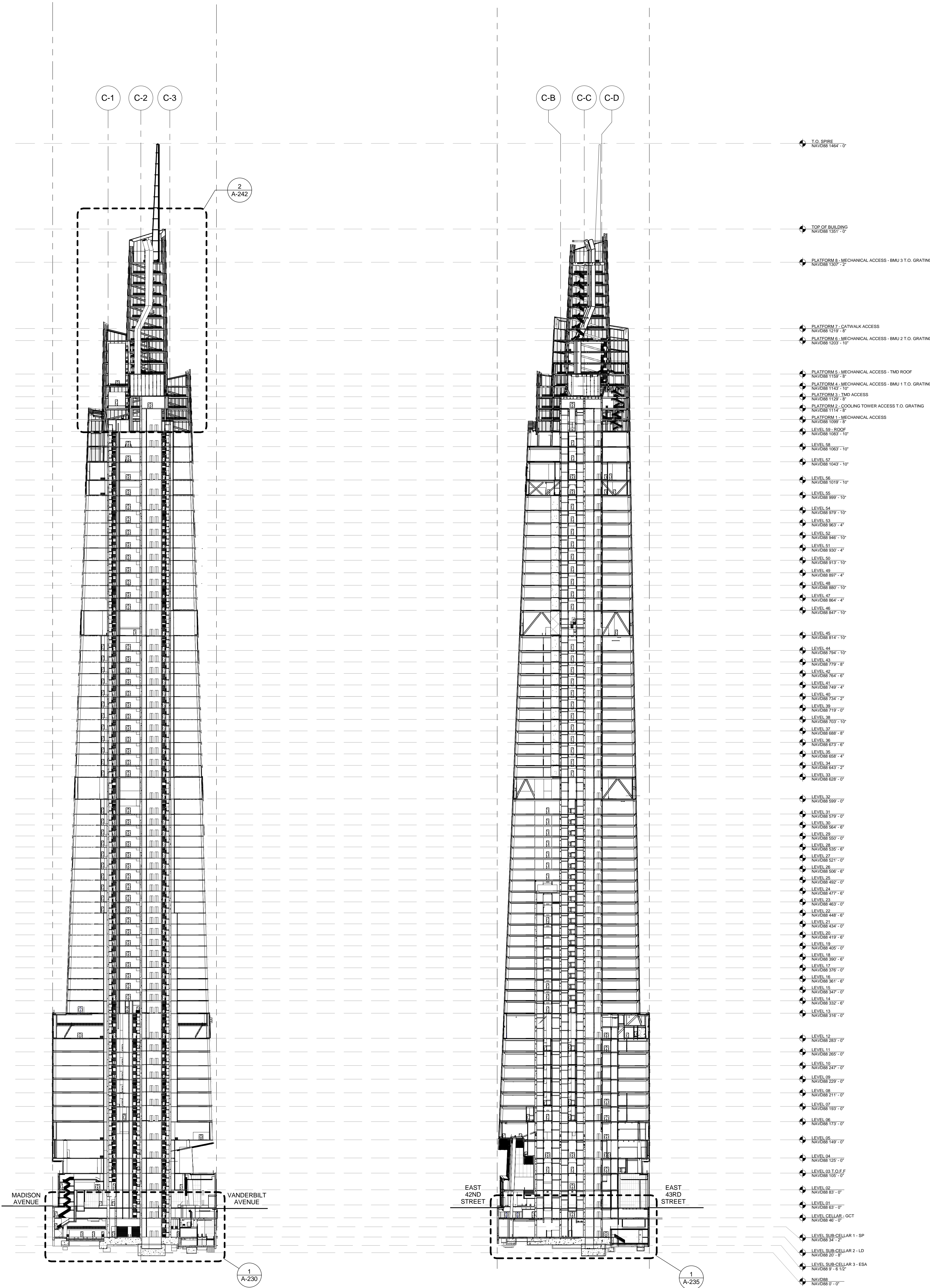
**Mechanical, Electrical, Plumbing, Fire Protection**  
 Carlos Baum & Bolles  
 10 Pine Street  
 New York, NY 10013  
 Tel: 212.530.9300 Fax: 212.269.5894

**Civil / Geotechnical Engineer**  
 ngen Engineering, Environmental, Surveying and  
 andscape Architecture, D.P.C.  
 Penn Plaza, 360 West 31 Street, 8th Floor  
 ew York, NY 10001  
 el: 212.479.5400 Fax: 212.479.5444

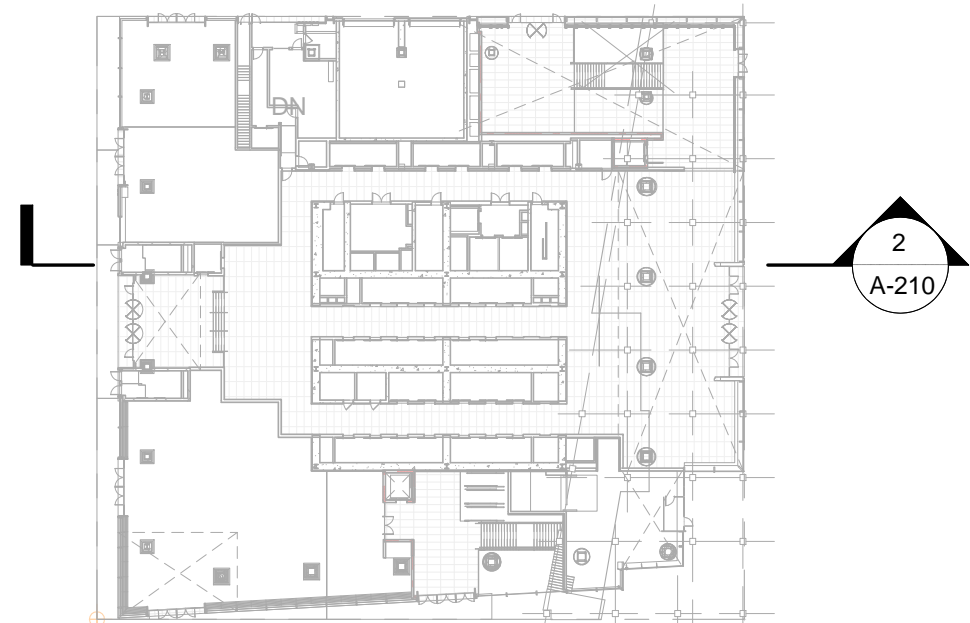
**Vertical Transportation**  
 Van Deusen & Associates  
 Regent Street, Suite 524  
 Livingston, NJ 07039  
 Tel: 973.994.9220 Fax: 973.994.2539

**Code Consulting**  
Code Consultants, Inc.  
15 West 40th Street, 15th Floor  
New York, NY 10018  
Tel: 212.216.9596 Fax: 212.216.9619

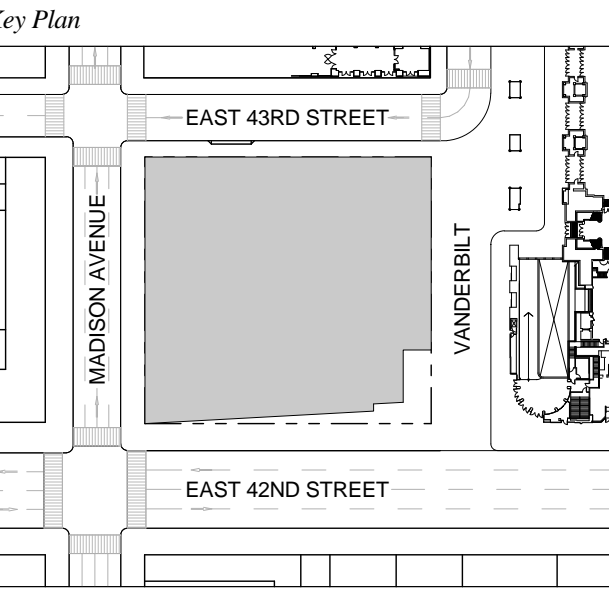
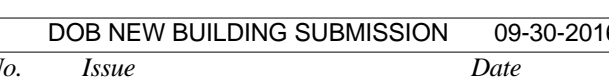
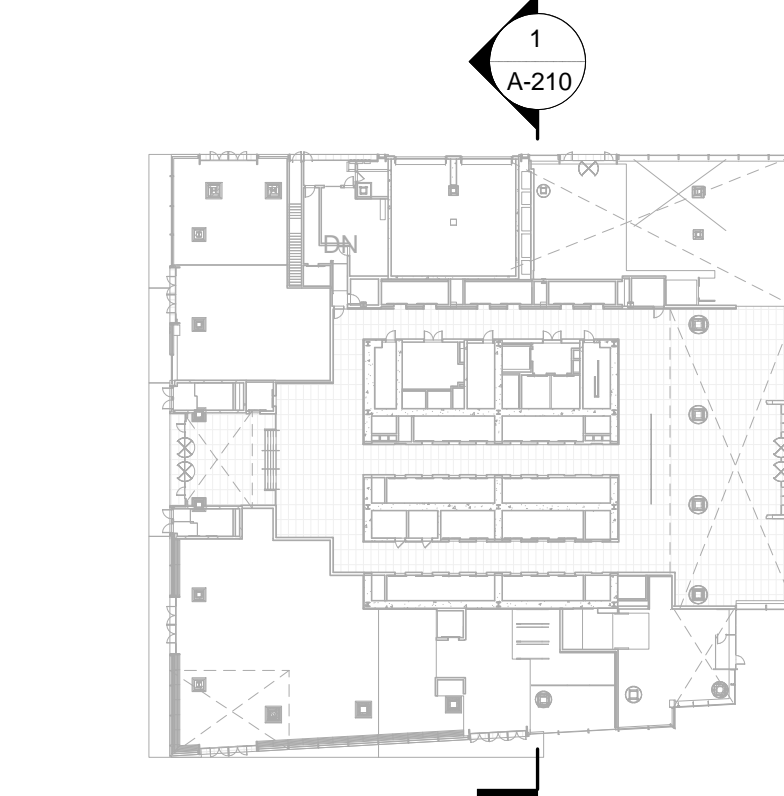
**GENERAL NOTES:**  
ALL ELEVATIONS ARE SHOWN IN NAVD88  
UNLESS OTHERWISE NOTED LEVEL LINES INDICATE T.O.S.



2 EAST-WEST SECTION LOOKING NORTH



1 NORTH-SOUTH SECTION LOOKING WEST



Issue Date:	09-30-2016
Project No.	1943
Drawn By	
Scale	1/64" = 1'-0"

## BUILDING SECTIONS

Drawing Number  
**A-210.00**  
SHEET 59 OF 278